

## KD-FLG Flat (Transparent) Glass Level Gauge



### KEY FEATURES

- Direct measurement of liquid levels in the tank under process temperature and pressure conditions.
- Suitable for opaque fluids such as fuel oil, lubricating oil or anti-freeze.
- Ideal for use in interface measurement such as fuel + water or bilge waste + water.
- Wide range of process connections, connection centres, valve options and scale graduations.
- Stainless steel, marine bronze and borosilicate glass construction ensures compatibility with common marine fluids such as fuel oil and bilge waste.
- Designed, constructed and type approved for marine duty by the DNV certifying authority.

## **Flat (Transparent) Glass Level Gauges**

Are constructed using a completely transparent glass (without reflex markings) with a reflective layer behind. The liquid level is viewed against this background.

Flat glass level gauges are used when the liquid is opaque (blocks lights). They are also commonly used for measuring the levels in a liquid + liquid interface.

They are suitable for low pressure applications with fluids such as fuel oil, lubricating oil and water / anti-freeze mixture. They are not to be used for water or steam + water interface level measurements; choose PSM's KD-RLG Reflex Glass Level Gauge for these applications.

They are simple to install using standard DIN pattern process flanges, and no calibration or routine maintenance is necessary.

A non-return valve is integrated into the bottom connection block, and this is available as an option on the top connection block also.

There are three options for top connection: top vent tube, closed tank return or closed tank return with integrated non-return valve.

Measuring scales are supplied manufactured with the exact graduations and markings for each application.

## Specifications

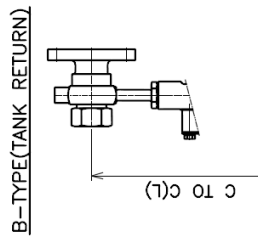
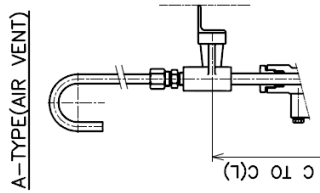
Mounting type	DIN / ANSI / JIS flange with integral support for longer gauge heights
Materials of construction	Top & bottom connection block: marine bronze Front & rear channel: 304 stainless steel Glass: Borosilicate Scale: marine bronze
Process connections centre - to- centre	285 ... 5100 mm
Process connection type	DIN / ANSI / JIS flange. Optional top vent tube.
Maximum operating pressure	5 barg
Maximum operating temperature	150°C For fluids having a flash point above 60°C
Type approvals	DNV Cert No. P-14649 ABS Cert No.04-BK459446/2-PDA

## Model code options

### Model code (ex: KD FLG DN20 PN10 / 1000 / B DN20 PN10 / X)

1. Bottom process connection	X	Customer specified DIN pattern flange (always with non-return valve in connection block)
2. Connection centre-to-centre	X	Customer specification in mm
3. Top process connection	A B C	Top vent tube Customer specified DIN pattern flange Customer specified DIN pattern flange with non-return valve in connection block
4. Scale markings	X	Customer specification according to application

## Dimensions and connection options



NO	PART NAME
1	VALVE
2	BOTTOM COLLAR
3	CONNECTOR
4	GLASS
5	GASKET
6	PACKING
7	FRONT CHANNEL
8	BACK CHANNEL
9	SUPPORT
10	TOP COLLAR
11	TOP BLOCK
12	SCALE SUPPORT
13	SCALE

