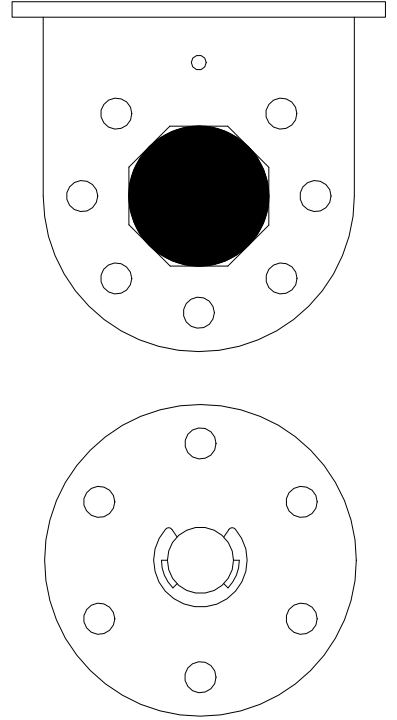


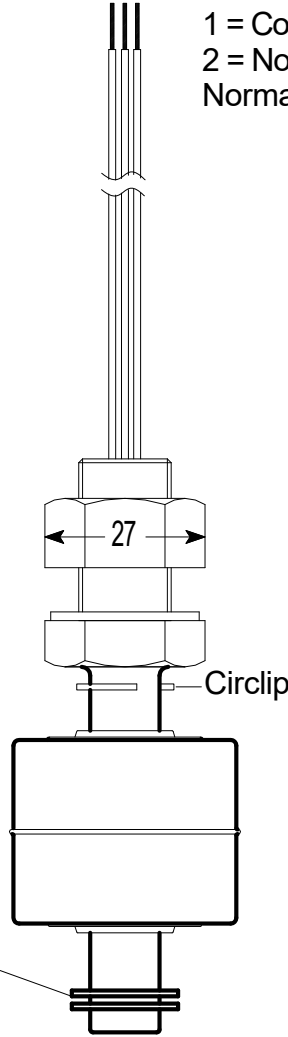
Perforated Top & End Plates



Float Assy

End Plate Retaining Circlip x 2 (See note)

Cable Idents  
 1 = Common  
 2 = Normally Open 3 = Normally Closed



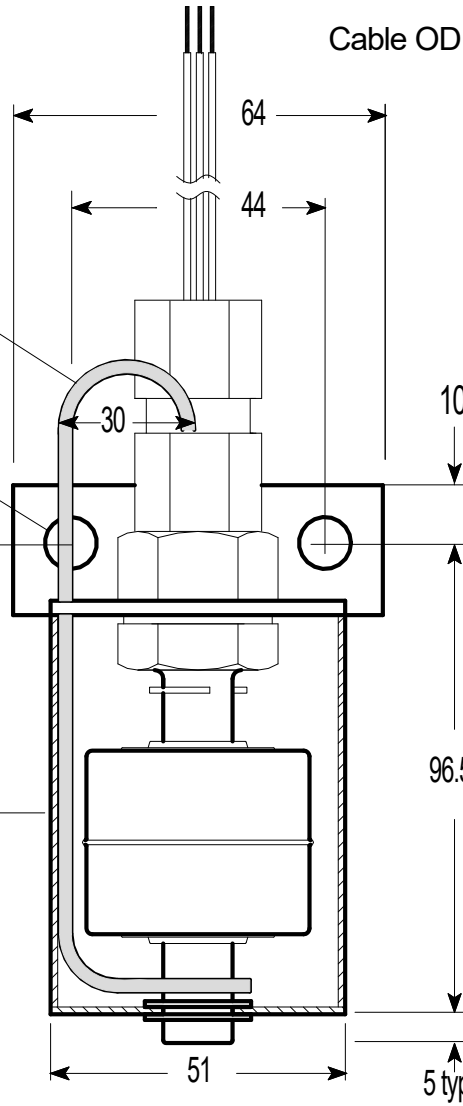
Mounting Holes  
 2 x 9mm dia

Circlip

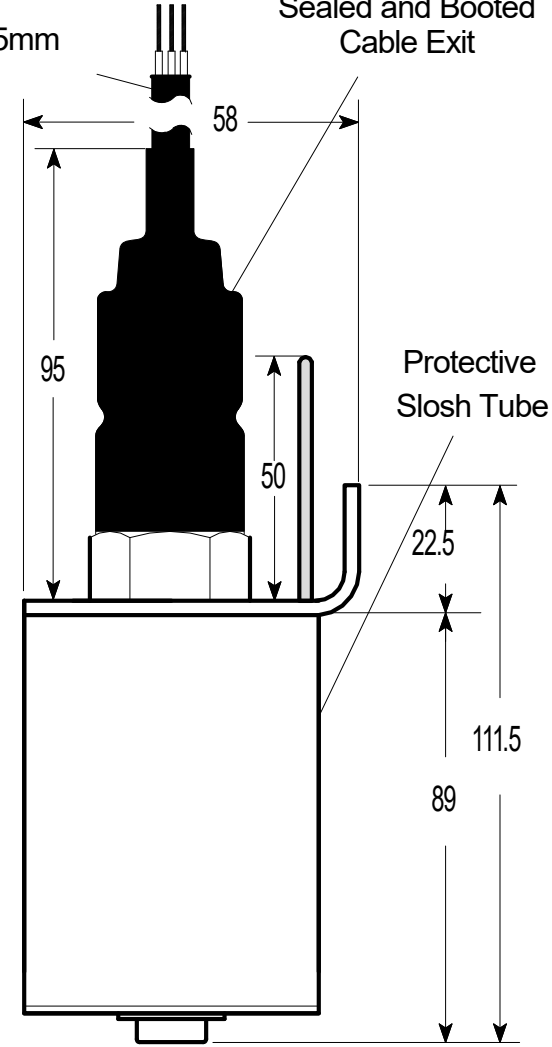
Nominal Actuation Point - SG Dependant

Cable OD 9.5mm

Manual Test Lever



Sealed and Booted Cable Exit



Protective Slosh Tube

Material All 316 Stainless Steel

**Note:** For High Shock (HS) variants of switch the end plate retaining circlips are welded in place.

SCALE  
 NTS  
 FINISH

MATERIAL AND SPECIFICATION

ALL DIMENSIONS ARE IN MILLIMETERS UNLESS OTHERWISE STATED  
 TOLERANCES UNLESS OTHERWISE STATED +/-  
 0.1  
 ANG +/2

ISSUE	J
DATE	21.08.23
TCR	
DRAWN	SAL
CHECKED	MWJ

SHT 1  
 OF 1

A4



INSTRUMENTATION LTD

PART OF THE GROUP

TITLE  
 BLS9200 Bilge Switch  
 Dimensional Drawing

Datasheet DAT40

DRAWING No  
 S-001311-9200-DD

SALES DRAWING ONLY