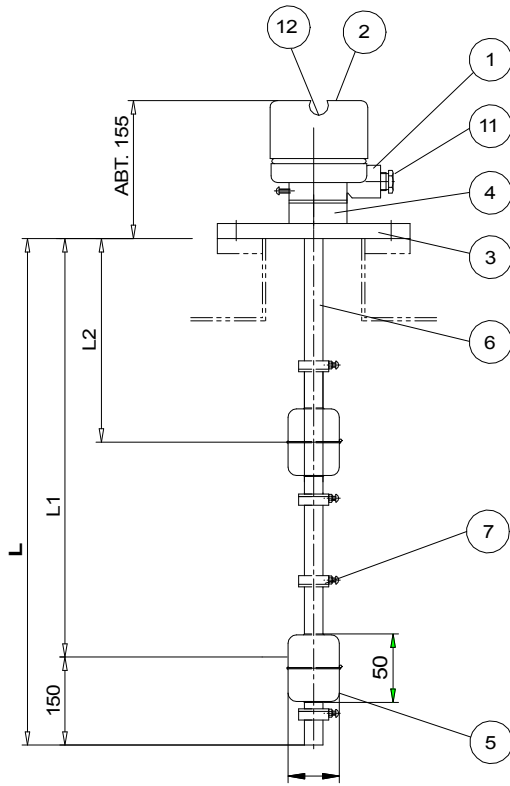


SALES DRAWING ONLY
NOT TO BE USED FOR MANUFACTURE



SPECIFICATION

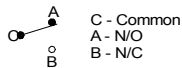
1. MAX. PRESSURE : 10bar
2. MAX. TEMPERATURE : 120°C
3. MOUNTING : TOP FLANGE
4. SWITCH : REED SWITCH TYPE
5. VOLTAGE : 250V, 0.5A
6. ENCLOSURE : IP66
7. APPLICATION : WATER & OIL

DN100 PN6 FLANGE DIMENSIONS (mm)

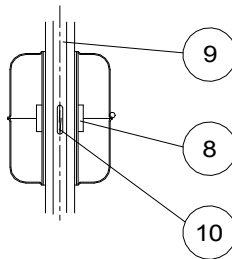
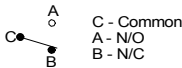
Flange Dimensions			Bolt Information		
OD	Thickness	PCD	No Bolts	Bolt Size	Hole Size
210	18	170	4	M16	18

WIRING DIAGRAM

C-A MAKES ON RISING LEVEL



C-B MAKES ON FALLING LEVEL



12	NAME PLATE	BC	1	MAKER
11	CABLE GLAND	BC	1	
10	REED SWITCH		2	
9	PLATE	PCB	1	
8	MAGNET	FERRITE	4	
7	STOPPER	SUS304	4	
6	SENSOR PIPE	SUS304	1	ø21.7
5	FLOAT	SUS304	2	
4	SOCKET	SUS304	1	
3	FLANGE	SUS304	1	DN100 PN6
2	COVER	ALC	1	
1	BODY	ALC	1	

ISSUE	A
DATE	04-02-16
DCR	
DRAWN	SAL
CHECKED	MVJ

PSm Instrumentation Ltd

Haywards Heath, West Sussex RH16 1TW
ph: 44 (0) 1444 410040 f: 44 (0) 1444 410121
<http://www.psmmarine.com>

SCALE
NTS

UNLESS OTHERWISE STATED DIMENSIONS ARE IN
MILLIMETRES / INCHES

TITLE
KD30-9-2A-W-G Top Mount Dual
Float Switch with DN100 PN6 Flange

DRAWING NO
S-001429-SW-GA

A4 SHT 1
OF 1