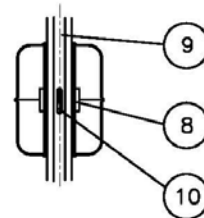
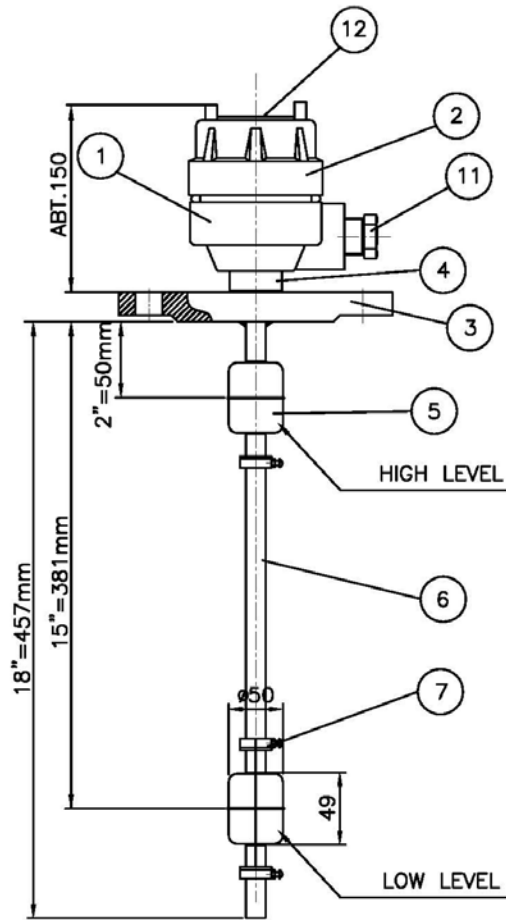


SALES DRAWING ONLY
NOT TO BE USED FOR MANUFACTURE



SPECIFICATION

1. MAX. PRESSURE : 7Kg/cm²
2. MAX. TEMPERATURE : 120°C
3. MOUNTING : TOP FLANGE
4. SWITCH : REED SWITCH TYPE
5. VOLTAGE : 250V
6. ENCLOSURE : IP56
7. APPLICATION : WATER & OIL

PART NO	PART NAME	MATERIAL	Q'TY	REMARK
12	NAME PLATE	BC	1	
11	CABLE GLAND	BC	1	15C
10	REED SWITCH		2	
9	PLATE	PCB	1	
8	MAGNET	FERRITE	2	
7	STOPPER	SUS304	3	
6	SENSOR PIPE	SUS304	1	
5	FLOAT	SUS304	2	
4	SOCKET	SUS304	1	2"ANSI 150# RF
3	FLANGE	SUS304	1	
2	COVER	ALC	1	
1	BODY	ALC	1	

UNIT	MM	MANAGER	TITLE
WEIGHT	KG	CHEF	KD-30-92A-W-G ASSEMBLY DRAWING
SCALE	N/A	SUB	
3D ANGLE PROJECTION	CHECKED		REV
DATE	DRAWN		△

ISSUE	A
DATE	17-03-11
DCR	
DRAWN	SAL
CHECKED	

PSM Instrumentation Ltd

Haywards Heath, West Sussex RH16 1TW
 ph: 44 (0) 1444 410040 f: 44 (0) 1444 410121
<http://www.psm-sensors.co.uk>

SCALE
NTS

UNLESS OTHERWISE STATED DIMENSIONS ARE IN
MILLIMETRES / INCHES

TITLE
KD30-92A-W-G
Float Switch

DRAWING NO
S-1342-SW-GO

A4 SHT 1 OF 1