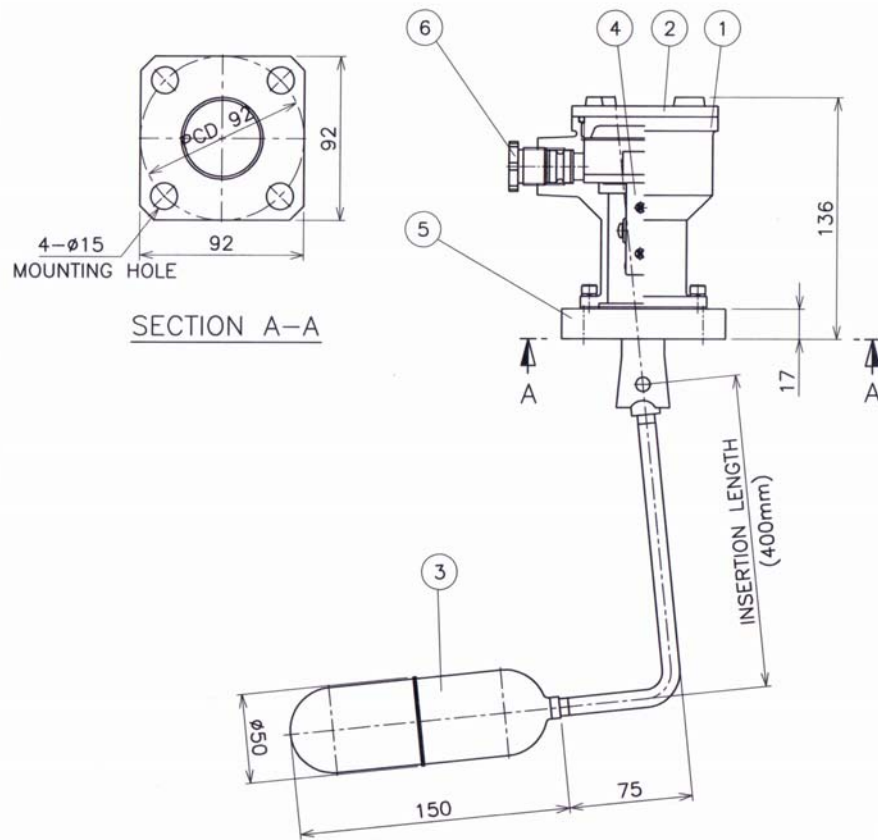
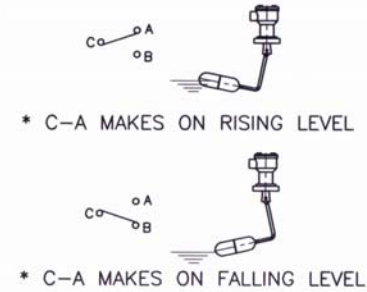


SALES DRAWING ONLY
NOT TO BE USED FOR MANUFACTURE



WIRING DIAGRAM



SPECIFICATION

1. INSTALLATION ; TOP MOUNTING
2. MAX. PRESS. ; 7 Kg/cm²
3. MAX. TEMP. ; 120°C
4. CONTACT ; SPDP, 3A, 250V
5. ENCLOSURE ; IP-56
6. COLOR ; MUNSELL NO. 7.5 BG 7/2

PART NO	PART NAME	MATERIAL	Q'TY	REMARK
6	CABLE GLAND		1	15 or 20
5	FLANGE	SS41	1	
4	SWITCH BOX		1	
3	FLOAT	SUS304	1	
2	COVER	ALC	1	
1	BODY	ALC	1	

UNIT	MM	MANAGER	TITLE
WEIGHT	KG	CHIEF	KD-121V-W TYPE
SCALE	N/S	SUB	ASSEMBLY DRAWING
3D ANGLE PROJECTION	CHECKED	DWG NO	KDA-LS12-A005
DATE	10.10. 1	DRAWN	KUK DONG LEVEL CO.
			REV
			△

ISSUE	A
DATE	23-02-11
DCR	
DRAWN	SAL
CHECKED	

PSM Instrumentation Ltd

Haywards Heath, West Sussex RH16 1TW
 ph: 44 (0) 1444 410040 f: 44 (0) 1444 410121
<http://www.psm-sensors.co.uk>

SCALE
NTS

UNLESS OTHERWISE STATED DIMENSIONS ARE IN
MILLIMETRES / INCHES

TITLE
KD121V-W-A Float Switch

DRAWING NO
S-1340-SW-GO

A4

SHT 1
OF 1