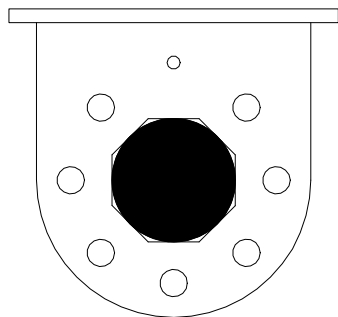
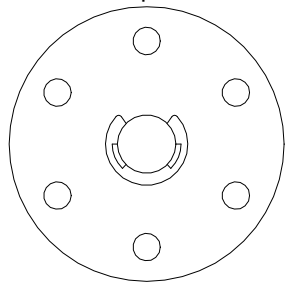


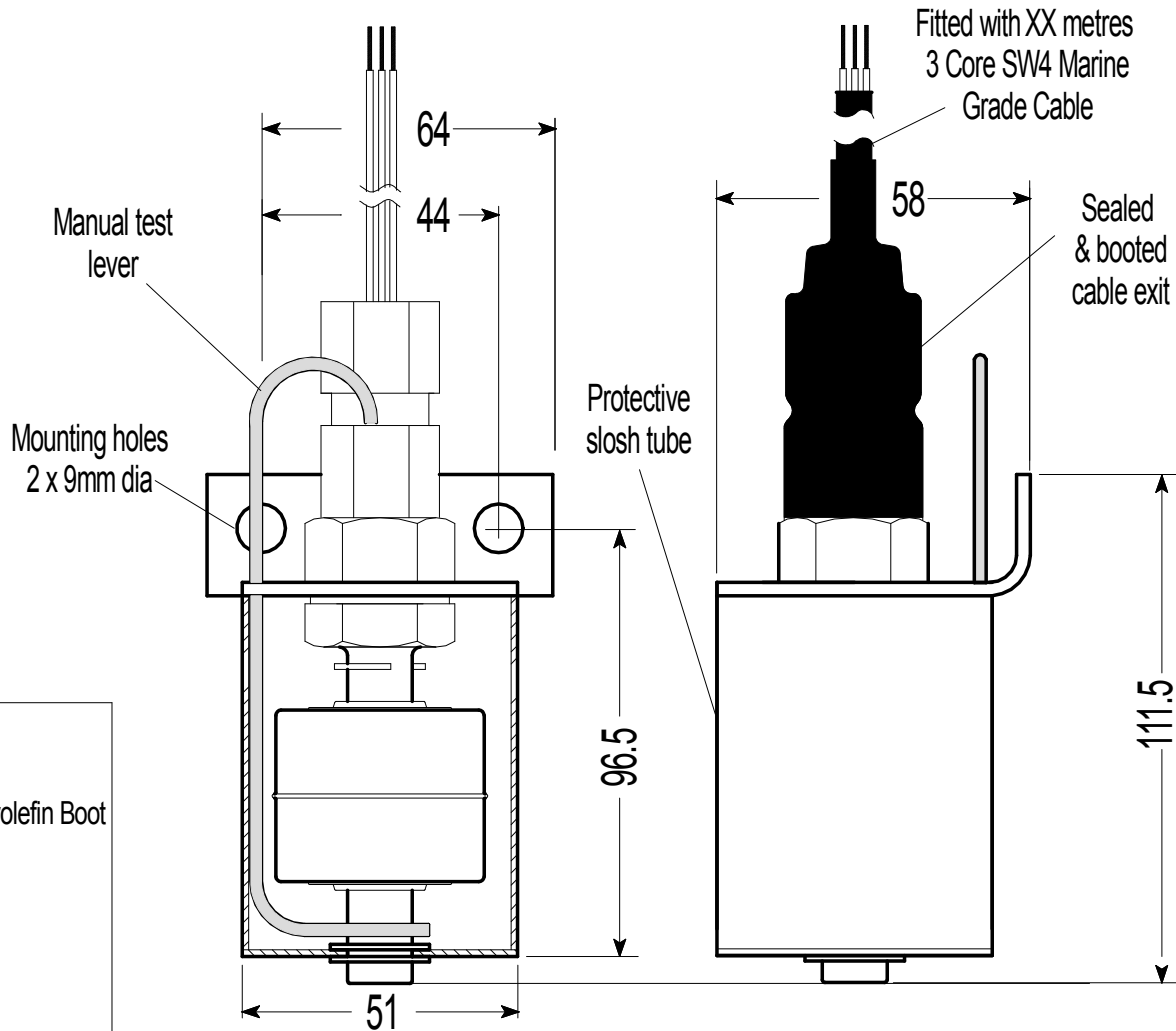
BLS 9200 supercedes and directly replaces earlier model BLG250



Perforated Top & End Plates



Manufacturer: PSM Instrumentation Ltd  
 Material: All 316 Stainless Steel  
 Cable: 3 Core SW4 Marine Grade Cable with Polyolefin Boot  
 Process Temperature: -10 to +90C  
 Switch: S.P.C.O. reed form c  
 Max rating: 100 Watt AC/DC resistive load.  
 Max voltage: 500 Vdc / 250Vac  
 Max current: 3 A  
 Float s.g: 0.62



SCALE		FINISH	
NTS			
MATERIAL AND SPECIFICATION			
ALL DIMENSIONS ARE IN MILLIMETERS UNLESS OTHERWISE STATED			
TOLERANCES UNLESS OTHERWISE STATED			
		±0.1	ANG #±2
ISSUE	DATE	DRAWN	CHECKED
D	12-02-20	SAL	MU



**INSTRUMENTATION LTD**

PART OF THE **scanjet** GROUP

TITLE  
 BLS Bilge Switch  
 Series 9200 Spec  
 Datasheet DAT40

DRAWING No  
 S-001312-9200-GO  
 SALES DRAWING ONLY

SHT 1  
 OF 1

A4