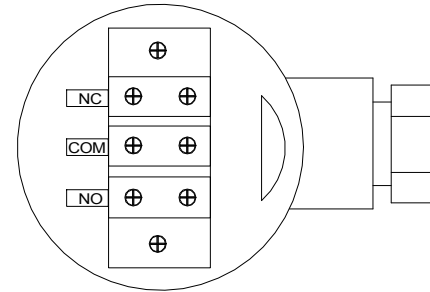
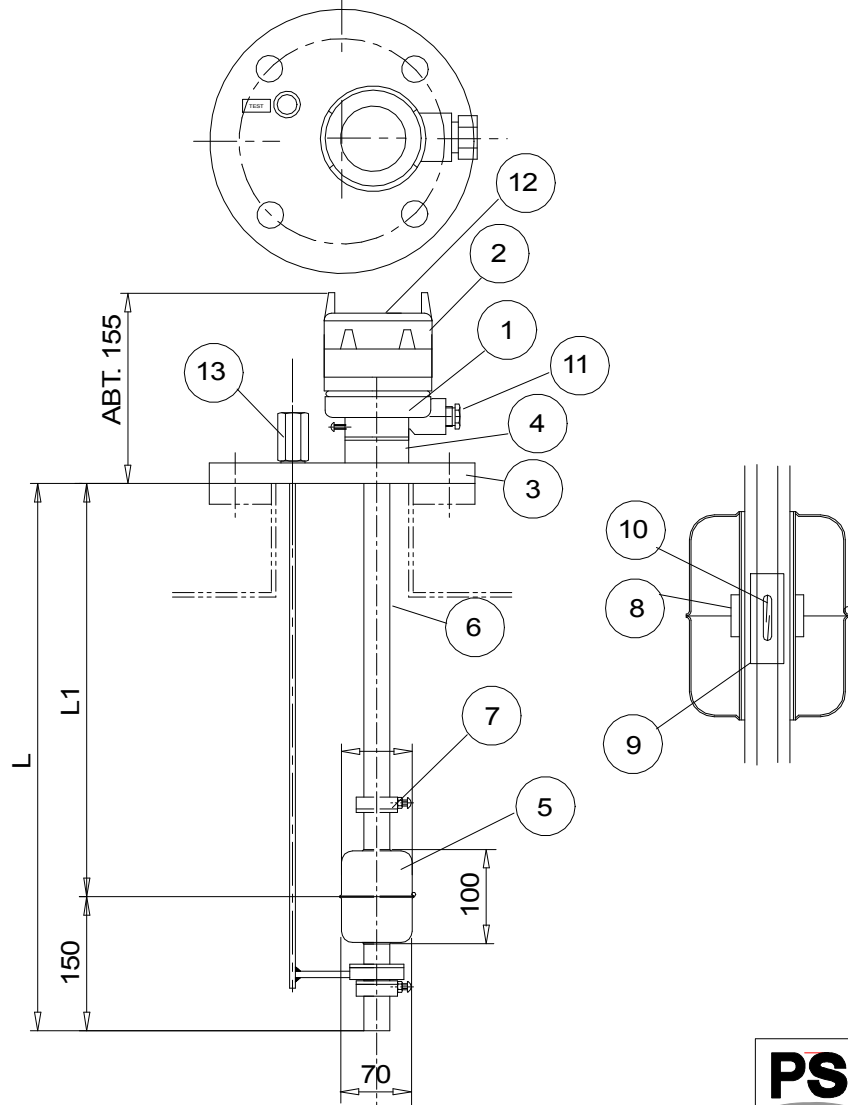


SALES DRAWING ONLY
NOT TO BE USED FOR MANUFACTURE

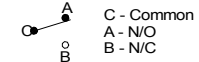
DN100 PN6 FLANGE DIMENSIONS (mm)

Flange Dimensions			Bolt Information		
OD	Thickness	PCD	No Bolts	Bolt Size	Hole Size
210	18	170	4	M16	18

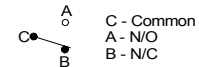


SWITCH FUNCTION

C-A MAKES ON RISING LEVEL



C-B MAKES ON FALLING LEVEL



KEY	DESCRIPTION	MATERIAL	QTY	DETAIL
13	TEST LEVER/CAP	SUS304	1	M.O.R.
12	NAME PLATE	BC	1	MAKER
11	CABLE GLAND	BC	1	
10	REED SWITCH		2	
9	LOCATING PLATE	PCB	1	
8	MAGNET	FERRITE	4	
7	FIXED FLOAT STOP	SUS304	4	
6	SUPPORT TUBE	SUS304	1	ø21.7
5	FLOAT	SUS304	2	
4	SOCKET	SUS304	1	
3	MOUNTING FLANGE	SUS304	1	DIN100
2	TERMINAL COVER	ALC	1	
1	TERMINAL BODY	ALC	1	

SPECIFICATION

1. MAX. PRESSURE : 10bar
2. MAX. TEMPERATURE : 120°C
3. MOUNTING : TOP FLANGE
4. SWITCH : REED SWITCH TYPE
5. VOLTAGE : 250V, 0.5A
6. ENCLOSURE : IP56
7. APPLICATION : WATER & OIL

MANUFACTURED LENGTHS L & L1 ARE SPECIFIED BY CUSTOMER

ISSUE	DATE	DCR	DRAWN	CHECKED
A	18-04-07	JEK		
B	07-01-14	SAL		
C	23-02-17	MVJ		

PSm Instrumentation Ltd

Haywards Heath, West Sussex RH16 1TW
ph: 44 (0) 1444 410040 f: 44 (0) 1444 410121
<http://www.psmmarine.com>

SCALE
NTS

UNLESS OTHERWISE STATED DIMENSIONS ARE IN
MILLIMETRES / INCHES

TITLE
High Level Float Switch
KD30-9-1A-W-T

DRAWING NO
S-001290-SW-GA

A4

SHT 1
OF 1