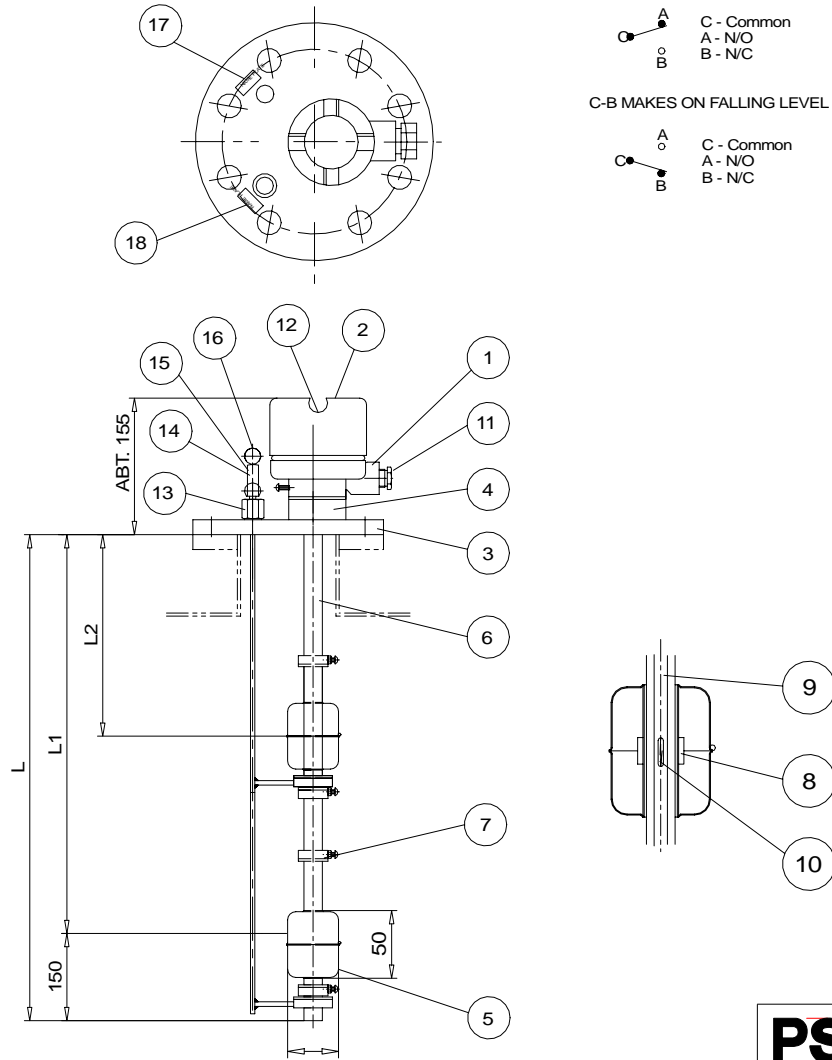


SALES DRAWING ONLY  
NOT TO BE USED FOR MANUFACTURE



**SPECIFICATION**

1. MAX. PRESSURE : 10bar
2. MAX. TEMPERATURE : 120°C
3. MOUNTING : TOP FLANGE
4. SWITCH : REED SWITCH TYPE
5. VOLTAGE : 250V, 0.5A
6. ENCLOSURE : IP56
7. APPLICATION : WATER & OIL

18	NAME PLATE		1	HIGH ALARM
17	NAME PLATE	SUS304	1	HIGH ALARM
16	CAP		1	
15	SPRING	SUS304	1	
14	TEST LEVER	SUS304	1	HIGH HIGH
13	TEST LEVER	SUS304	1	HIGH
12	NAME PLATE	BC	1	MAKER
11	CABLE GLAND	BC	1	
10	REED SWITCH		2	
9	PLATE	PCB	1	
8	MAGNET	FERRITE	4	
7	STOPPER	SUS304	4	
6	SENSOR PIPE	SUS304	1	ø21.7
5	FLOAT	SUS304	2	
4	SOCKET	SUS304	1	
3	FLANGE	SUS304	1	DIN100
2	COVER	ALC	1	
1	BODY	ALC	1	

ISSUE	A	B
DATE	18-04-07	07-01-14
DCR		
DRAWN	JEK	SAL
CHECKED		

**PSm** Instrumentation Ltd

Haywards Heath, West Sussex RH16 1TW  
ph: 44 (0) 1444 410040 f: 44 (0) 1444 410121  
<http://www.psmmarine.com>

SCALE  
NTS

UNLESS OTHERWISE STATED DIMENSIONS ARE IN  
MILLIMETRES / INCHES

TITLE  
Float Switch  
KD30 2A-W-T

DRAWING NO  
S-001288-SW-GA

**A4** SHT 1 OF 1